

Acta Geographica Debrecina

Volume 10. Issue 3-4. 2016

Landscape & Environment



Debrecen

PREFACE

This issue of *Acta Geographica Debrecina Landscape and Environment* is dedicated to the 70 year old Prof. József Lóki

József Lóki graduated in 1971 in the Lajos Kossuth University in Debrecen and defended his doctoral thesis in 1975. He became the Candidate of Sciences (CSc) in 1996. His research area is the investigation of wind erosion in wind tunnel validated with field experiments. He determined the threshold wind speed, i.e. the given wind speed when the wind erosion begins, for different soil types. He tested several techniques to reduce the effects of wind erosion. These studies are valid nowadays, too and the results are applied in new experiments in all over the country. Accordingly, he is one of the editor of the wind erosion section of the National Atlas of Hungary.

One of the most relevant methodology in his research was the GIS. This young scientific area has about a 25 years old history and Prof. Lóki József had a good sense to realize its importance for the geographical education and research. Regarding his efforts the GIS Centre had been formed in the Institute of Geosciences in 1993. Later, the GIS Centre merged with the Department of Physical Geography and the name transformed to Department of Physical Geography and Geoinformatics in 2003. He was the head of department between 2005 and 2011.

He was awarded with the Reward of Ministers in 1979 and 1987, the Pro Geographia Reward of the Hungarian Society of Geography in 1997, the Order of Merit of the Republic of Hungary (Silver Cross) in 2003, the Lóczy Lajos Plaquet of the Hungarian Society of Geography and the Pro Universitate Reward of the University of Debrecen in 2015. He won the Széchenyi Professorship between 1999-2002.

He has considerable public activity, too. He was the member of the MTA's (Hungarian Academy of Sciences) X. Division, Scientific Committee of Physical Geography 1999-2002; 2005-2008; 2008-2011; 2014-nowadays). He was the founder of the Scientific Committee of Physical Geography's Subcommittee of Geoinformatics. He is the member of the Scientific Committee of Physical Geography's Geomorphological Subcommittee and the Scientific Committee's Subdivision of Geomathematics. He helped the work of several OTKA as a jury member. He also took part in the work of the HUNAGI as a leader member. He is the member of the Hungarian Geographical Society from 1971 and he was awarded to be Respected member.

He never wanted to be a leader, he sentenced his life for the education and research. However, when he became the head of his department, all opinions were positive regarding his activity. He was strict, straight and honest and all of his colleagues recognised his efforts. Nowadays, as he is 70, he is a role play for the young researchers as performing research, publishing papers and tutoring the PhD students.

In this issue of the journal papers are dedicated to the 70 years old Prof. Lóki József written by his colleagues and friends.

ACTA GEOGRAPHICA DEBRECINA

LANDSCAPE AND ENVIRONMENT

Volume 10. Issue 3-4. 2016

Editor-in-Chief:

Péter Csorba

Managing Editor, principal contact:

Tibor J. Novák

Technical editor:

László Bertalan

István Lázár

Associate Editors:

Sándor Szegedi (climatology, meteorology)

Szilárd Szabó (GIS, environmental issues)

Gábor Kozma (tourism, economic and social geography)

Editorial board:

Antal Aubert (Pécs, Hungary)	Dénes Lóczy (Pécs, Hungary)
Ilona Bárarny-Kevei (Szeged, Hungary)	József Lóki (Debrecen, Hungary)
Attila Barczy (Gödöllő, Hungary)	Anders Lundberg (Bergen, Norway)
Lajos Blaskó (Karcag, Hungary)	Gábor Mezősi (Szeged, Hungary)
Mihály Braun (Debrecen, Hungary)	Gábor Michalkó (Budapest, Hungary)
Péter Burai (Gyöngyös, Hungary)	János Mika (Eger, Hungary)
Endre Dobos (Miskolc, Hungary)	László Miklós (Zvolen, Slovakia)
Lucian Dragut (Timisoara, Romania)	Arnfinn Seim (Bergen, Norway)
Andrea Farsang (Szeged, Hungary)	Sudhir Kumar Singh (Allahabad, India)
Luise Giani (Oldenburg, Germany)	József Szabó (Debrecen, Hungary)
Gergely Hortváth (Budapest, Hungary)	Zoltán Szalai (Budapest, Hungary)
Attila Kerényi (Debrecen, Hungary)	Péter Szilassi (Szeged, Hungary)
Éva Konkoly-Gyúró (Sopron, Hungary)	János Unger (Szeged, Hungary)

Founded in 2007

Péter Csorba – Károly Tar

Department of Landscape Protection and Environmental Geography

Department of Meteorology

University of Debrecen

Publisher:

Institute of Earth Sciences

The issue sponsored by

Meridián Foundation

HU ISSN 1789-4921 (Print)

HU ISSN 1789-7556 (Online)

TABLE OF CONTENT

ILONA BÁRÁNY-KEVEI – MÁRTON KISS

Biogeomorphological feedback in karst areas 101

**DÉNES LÓCZY – JÓZSEF DEZSŐ – SZABOLCS CZIGÁNY –
ERVIN PIRKHOFFER**

**Hydromorphological assessment of the lower Hungarian Drava section and its
floodplain** 109

MARIANNA ZICHAR

Guidelines for cost-effective geovisualization in digital forensics 117

ISTVÁN KOLOZSVÁRI – JÓZSEF MOLNÁR – GYÖRGY DÉVAI

**Recent river channel change detections in the section of the River Tisza above
Tiszaújlak (Виллок)** 123

JÁNOS PÉNZES

Centre-Periphery Dichotomy and its Investigation by GIS Methods 131

**CSABA ALBERT TÓTH – NORBERT BARKÓCZI – RICHARD WILLIAM
MCINTOSH - ZSOLT JÓZSEF PLÁSZTÁN**

**Studying the development of fluvial landforms in the Berettyó-Körös Region
using geoinformatic methods** 137

**TAMÁS BUDAY – ERIKA BUDAY-BÓDI – RICHARD WILLIAM MCINTOSH –
MIKLÓS KOZÁK**

**Geoinformatic background of geothermal energy utilization and its
applications in East Hungary** 145

LÁSZLÓ BERTALAN – ZOLTÁN TÚRI – GERGELY SZABÓ

**UAS photogrammetry and object-based image analysis (GEOBIA): erosion
monitoring at the Kazár badland, Hungary** 153

BESIM AJVAZI – FISNIK LOSHI – BÉLA MÁRKUS

From Surveying to Geomatics 161

RICHARD WILLIAM MCINTOSH - BALÁZS ENCS Rock mass rating in Bükk Mts., N Hungary based on petrophysical parameters and parting conditions	169
ISTVÁN SÜLI-ZAKAR The Formation of Social and Economic Peripheries in Hungary after the Change of Regime	179
ERNŐ MOLNÁR - ISTVÁN MÁTÉ LENGYEL The Hungarian footwear industry in global production networks: the case study of Berkemann Hungary	188
SZILÁRD SZABÓ - ZOLTÁN GÁCSI - BOGLÁRKA BALÁZS Specific features of NDVI, NDWI and MNDWI as reflected in land cover categories	194
LÁSZLÓ PÁSZTOR - ANNAMÁRIA LABORCZI - KATALIN TAKÁCS - GÁBOR SZATMÁRI - GÁBOR ILLÉS - NÁNDOR FODOR - GÁBOR NÉGYESI - ZSÓFIA BAKACSI - JÓZSEF SZABÓ Spatial distribution of selected soil features in Hajdú-Bihar county represented by digital soil maps	203
FERENC SCHWEITZER - ÉVA KIS The surroundings and the age of the upper paleolithic site on Susak island	214
LÁSZLÓ SÜTŐ - ERIKA HOMOKI - ZOLTÁN DOBÁNY - PÉTER RÓZSA Transformation of land use pattern in the East Borsod coal basin from the beginning of minig industry to the political changes	223
GYULA LAKATOS - ILDIKÓ MÁTRAI - KUNDRÁT JÁNOS - GYULAI ISTVÁN The Mass Ratio of the Epiphytic Periphyton of the Nyéki-Holt-Duna	232
ÁDÁM KERTÉSZ Is desertification a problem in Hungary?	242

RECENT RIVER CHANNEL CHANGE DETECTIONS IN THE SECTION OF THE RIVER TISZA ABOVE TISZAÚJLAK (ВИЛОК)

ISTVÁN KOLOZSVÁRI^{1,3}, JÓZSEF MOLNÁR², GYÖRGY DÉVAI³

¹ István Fodor Research Centre, Department of Biology and Chemistry, Ferenc Rákóczi II Transcarpathian Hungarian Institute, Kossuth square 6, UA-90202 Beregove, Ukraine

² Department of Earth Sciences and Tourism, Ferenc Rákóczi II Transcarpathian Hungarian Institute, Kossuth square 6, UA-90202 Beregove, Ukraine

³ Department of Hydrobiology, University of Debrecen, H-4032 Debrecen, Egyetem tér 1, Hungary

e-mail: kolozsvaros@gmail.com; jozsi@kmf.uz.ua; devai.gyorgy@science.unideb.hu

Received 19 July 2016, accepted in revised form 31 August 2016



Abstract

In the section above Tiszaújlak, despite the presence of embankments, the River Tisza shows active meandering tendency and it splits into branches resulting in side channels, dead channels and backwaters that follow the main channel. In our work we examined the right- and the left-side riverbank sections of the River Tisza, between Tiszaújlak (Вилок) and Tizasásvár (Тросник), as well as between Tiszaújlak and Tiszapéterfalva (Пийтерфолво), to reveal the extent of bar depositions between 2006 and 2015, and to what extent the intensity and direction of the riverbank formation processes were influenced by the material of the bank and the plant coverage, its rate and characteristics. We tried to reveal which sections were eroded by the river and what security risks they have for the safety of the settlements along the Tisza River. On the right side of the Tisza River riverbank 51, and on the left side 62 main measuring points were recorded by GPS positioning satellite in 2009, 2010 and 2015. Our results were compared to the satellite images of Google Earth taken in 2006, too. According to our experience, in several bends of the examined sections of the river, active bar deposition can be observed; in some cases more than 100 m of bar depositions were detected.

Keywords: Ukraine, Upper-Tisza, anastomosing channel type, lateral erosion, cut bank, plant coverage, riverbank material

1. Introduction

River channels are almost never at rest. In the background of river channel development there are quite difficult natural and often anthropogenic factors (Németh 1954; Church 1992; Tímár 2005). It is very important to investigate rivers which often change their riverbends for several reasons, e.g. to provide the safety of people living there, because of the social exploitation of the riverbank or to preserve their natural characteristics (Nagy et al. 2002; Somlyódy 2002; Szikura

– Kolozsvári 2012). Regular field researches are indispensable to reveal the direction of riverbend depositions, its dynamics, or to realize the risk of possible floods.

The River Tisza has always been famous for its fast and capricious river channel change tendency. In Transcarpathia, leaving the Huszt-gate and the area of the Fekete-mountain, the river's descent decreases approximately to 1‰, its speed moderates and it builds an ever widening floodplain (Mike 1991; Афанасьев 2006). The section between Huszt and Tiszaújlak often splits into

branches and from place to place it shows an anastomosing pattern (Коноваленко 2007). The stream's energy expends on lateral erosion in a large measure and it results in the continuous rearrangement of the riverbank. Point bars and cut banks are frequent as well as extended mid-channel inlands and islands (Alföldi – Schweitzer 2003; Коноваленко 2007).

In the water regime of the River Tisza there is a yearly, regularly occurring flood period that is also important in the rearrangement of the channel and riverbank structures caused by the spring snow melting. Besides, floods occur any time of the year because of the abundant and regionally extensive rains (Заставецька et al. 1996; Поп 2003; Somogyi 2003; Molnár 2009; Левчак et al. 2013). In case of floods, sediment transportation increases, from the cut banks more alluvium is being transported away and in other places there is more sedimentation (Németh 1954). Riverbanks have been reinforced to protect the Tisza-valley's settlements, most often with built-in stone blocks, wire nettings, wattles and spur dykes in many places. However, the River Tisza regularly disrupts these protected riverbanks too. The continually reconstructing and transforming feature of the river channel is rather unique and it creates dynamically changing relations that are rich in different forms. Therefore, it is important to have up-to-date and precise information about the river channel formation activity of the rivers.

We aimed to detect the river channel change of the River Tisza in the sections between Tiszaújlak and Tiszasásvár (Тросник), Tiszaújlak and Tiszapéterfalva (Пийтерфолво) with the help of recording coordinates of the examined cut banks between 2006 and 2015. Our further aim was to evaluate the extent of characteristics, material and plant coverage influence on the intensity and direction of the river channel change. Our long-term aim is to create a database that can be used as a reference point in similar researches.

2. Materials and Methods

Our field work was carried out on 24 July 2009, 9 April 2010, and 13 April 2015 on the right bank of the River Tisza (in the section between the road bridge at Tiszaújlak and the natural gas line crossing the River Tisza near Tiszasásvár). The exploration of the left-bank section (between the road bridge at Tiszaújlak and Tiszapéterfalva) was carried out on 2 November 2009, 26 April 2010 and 23 April 2015. On the right side of the riverbank the coordinates of 51, while on the left side the coordinates of 62 main measuring points were recorded with the help of GPS positioning satellite based on UTM projection.

The river's erosional efficiency on its bed and banks greatly depends on the terrain of the area, the stream relations and the peculiarities of the river bed material resistance. Moreover, the characteristics of the riverbank vegetation play an important role in the stabilization of the river bed, too (Lászlóffy 1949; Ackers 1982; Church 1992; Brookes 1994; Wade 1994; Robert 2003; Richard et al. 2005; Lóki – Szabó 2006). When marking out the measuring points we took into consideration the flowing characteristics of the given Tisza-section, we observed the structural peculiarities of the given riverbank section, we surveyed the characteristics of the river bank material, as well as the sediment grain size and plant coverage.

During the analysis, first of all we concentrated on the changes of the concave, high, cut bank sections because these are the main scenes of the lateral erosion. Furthermore, according to our experience, the current territorial extension of the convex, being built-up point bar sections, greatly depends on the river's water level when measured. On the right side of the riverbank we added prefix A, on the left side we added prefix B to the labels of the numbered and examined river bends (Fig. 1 and Table 1). To help the identification of the river bends we measured the UTM geocoordinates of the middle points of the

river bend curvatures. Since the given section of the River Tisza is fast-changing and it splits into branches, the retrieval of the river bends is more precise and easier this way than with the determination of the river kilometres.

We used the ArcGIS 10.0 (ESRI) and the Google Earth to represent the examined area. We vectorized the study area's river bend curvatures in 2006 then compared them to the bend shapes of 2009, 2010 and 2015. We corrected the joining imprecisions of the Google Earth satellite images with correctional measuring. We defined the coordinates of some distinct terrain objects that can be identified both in the field and on satellite images easily. We appointed linear correctional values regarding to the X and Y coordinates read from the satellite images with the help of the following formulae

$$\Delta X = \frac{\sum_{i=1}^n (X_{GPSi} - X_{GEi})}{n}, \text{ and } \Delta Y = \frac{\sum_{i=1}^n (Y_{GPSi} - Y_{GEi})}{n}$$

where ΔX – is the correctional value of X coordiante; X_{GPSi} – is the value of the i nth point's X coordinate read from Google Earth satellite image (the second formula contains analogue notations referring to the Y coordinate's correctional values). So we got the real coordinates of the riverside points with adding the correctional values to the coordinates read from the Google Earth satellite images. The application of the method was confirmed with that the correctional values referring to different parts of the riverside of the River Tisza did not differ considerably.

The extension of the riverbank erosion (the extension of the wash away area) was defined with the help of polygons determined by the measuring points' coordinates. The River Tisza has several branches in the examined section. Considering that the speed of erosion greatly depends on the water discharge, we had to estimate the relative water discharge of the certain river branches. We made an estimation with the assumption that the relative water discharge of the river branch can be calculated as its squared width ratio to the squared sum of the width of all

branches (to confirm further research should be done in the given river section that would exceed the frames of the present research); i.e. in the cross-sections of the river branches the width-average depth ratio, as well as the average speed do not diverge considerably. where BRD₁ – is the relative water discharge

$$BRD_1 = \frac{W_1^2}{W_1^2 + W_2^2},$$

on the scale 0–1, W_1 – is the width of the 1st river branch in meters; W_2 – is the width of the 2nd river branch in meters. We performed statistical analysis to determine what factors influenced the bank erosion speed. First we revealed the connection between the water discharge flowing through the given section and the bank erosion speed because this part of the River Tisza is anastomosing and it created a braided, branched river bed system. We applied the non-parametric Spearman's correlation according to the lack of normal distribution of the involved variables (relative water discharge, speed of lateral erosion). We analysed the differences of the erosion index of the gritty and the sandy-aleurit riverbank material referring to the research period as well as to the role of the river bank vegetation affecting bank erosion with t-tests.

3. Results

In the examined 20.3 km long section of the River Tisza we could detect considerable dislocations on 16 concave cut banks (Fig. 1). The radius of the examined river banks in 2006 varied between 141 m and 736 m, on average it reached 375 m. On the outward side of the curvatures, in the period between 2006 and 2015 we detected 1.9 and 33.9 m/year dislocations on average, and considering the average of the whole section the results show 9.7 m yearly erosion speed. On the examined river section the lateral erosion washed away 6.68 ha of floodplain area on average every year. Results showed significant coherence between water discharge and the lateral erosion speed, as the result of the Spearman-correlation is $r = 0.542$ ($p < 0.05$).

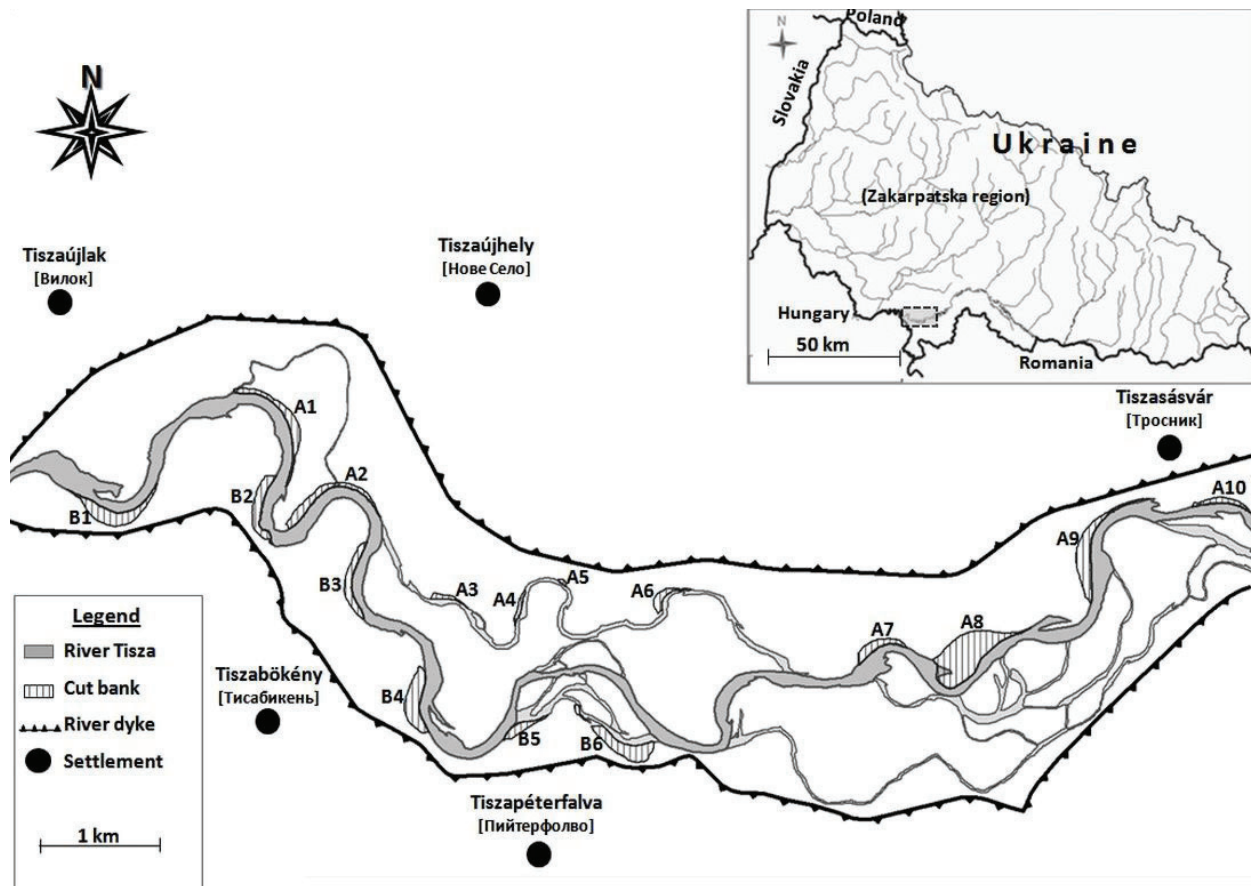


Fig. 1. The examined cut bank sections of the River Tisza between Tiszaújlak and Tizasásvár

Furthermore, we also revealed the relationship between the radius of the curvature and the speed of the lateral erosion. The Spearman's correlation coefficient, between the radius of the curvatures and the speed of the lateral erosion, was very weak ($r = 0.022$; $p > 0.05$). Our prior expectation, according to which in the bends with smaller radius and, thus, with bigger curve the riverbank wash away was more intense, was not confirmed. This can be also explained by the active components eliminated the effect of the bend's curvature.

Throughout our work we were also interested in that how the examined Tisza-section's cut bank grain composition peculiarities influence the degree of bank material wash away. The examined river bends were gathered into two groups based on their material. The sections with crucially gravelly bank material (10 pcs) and the sections with sandy-aleurit (6 pcs) material were separated. The gravelly cut banks yearly average deposition was 6.6 m

while the sandy-aleurit was 14.8 m between 2006 and 2015. According to the t-test this difference was significant to 95% probability. Accordingly, the gravelled river bank sections seem to be more resistant to lateral erosion.

Both the type of the riverside macro vegetation and its coverage ratio has a great effect on the river bank's degree of erodibility by the river (Hey 1994; Kiss et al. 2008). The riverbank vegetation increases the stability of the bank material, thus, the riverside becomes more protected compared to bare, vegetation-free riversides (Hickin 1984; Davis - Gregory 1994). Examining the effect of vegetation to the riverside stability we hypothesized that the arborescent vegetation, due to its more developed root system, has the largest potential to slow down the erosion. Out of the 16 riverbends 7 were covered with arborescent vegetation, while another 7 were covered with herbaceous vegetation; in 2 cases different composition of mixed phytocoenosis were found, so they were left out from the given analysis.

According to our preconception, bends covered with arborescent vegetation showed smaller erosion (8.4 m) on the outward curvature while in the case of bends covered with herbaceous vegetation it was bigger (12 m) although the difference was not found significant by the t-test (probably because of the relatively small number of cases).

4. Discussion

The River Tisza plays an important role in the formation of its surrounding area, thus, it became the part of people's life living here with all of its advantageous and devastating characteristics. Besides, on both riversides embankment systems were built, we cannot leave out of consideration the quite significant riverbank rearrangements from place to place. The resistance of the riverbanks may show great differences in the sections. Rivers attack the river banks consisting of loose-bind rock the fastest and with the most intensity (Balogh 1991; Bulla – Mendöl 1999). In case of some protected riverbends we also experienced that protective rip-rap, built-in spurs etc. mean

only temporary solution because the River Tisza continuously tears them up.

We detected the greatest riverside erosion in the sections between Tizasásvár and Tiszabökény. Regarding our study area, the biggest riverside curvature regression (305 m) and the previous channel structure's basic rearrangement was detected at Tizasásvár in a right-side section, labelled as A8 (Fig. 1). Because of the distance between the embankment and the riverside none of the right-side flood control dyke sections are endangered by the River Tisza. In the left-side section, out of the 6 examined cut banks, in the environment of the B6 section at Tiszabökény the most active rearrangement events were detected (136 m maximal deposition). Here, the River Tisza comes near to the embankment, only a few meters far, therefore, such riverside erosion in this rate in the future may threaten the settlement's safety. Although section B1 (105 m max. deposition) showed a bit smaller erosion than the river bend labelled as B6, it can have risk if the erosion goes on like this, because the dyke is quite near (Table 1 and Fig. 2).

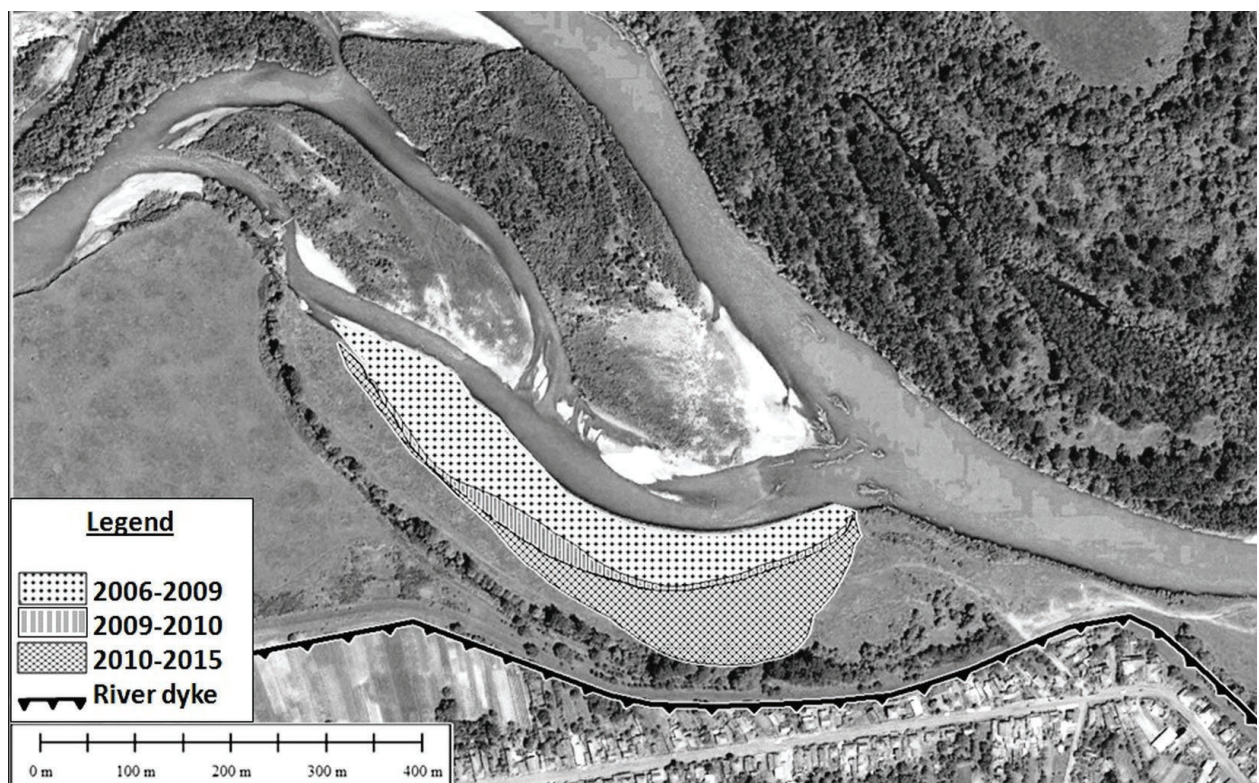


Fig. 2. Side erosion of the riverbend labelled as B6 at Tiszabökény in different time periods between 2006 and 2015

Table 1. The most important characteristics of the examined river bank sections (A – right-side curvature; B – left-side curvature; M – main channel; S – side channel)

Curvature sign	River branch type	Geocoordinates of the middle point of the curvature (UTM)	Radius of curvature (m)	River bank type based on the mechanic composition of the rock material	Main phytocoenosis of the bank	Relative water discharge of the river branch (absolute=1)	Maximum deposition of the bank between 2006 and 2015 (m)	Yearly average deposition of the bank(m/year)	Area of the eroded foreshore between 2006 and 2015 (ha)	Average yearly erosion of the foreshore (ha/year)
A1	M	34U 639221 5329073	458	stratified gravel and aleurit	forest	1.00	91	10.1	5.030	0.559
A2	M	34U 639459 5328641	299	stratified gravel and aleurit	forest	1.00	70	7.8	4.563	0.507
A3	S	34U 640458 5327712	397	stratified gravel and aleurit	grass/pasture ground	0.13	57	6.3	0.941	0.105
A4	S	34U 640982 5327689	320	stratified gravel and aleurit	bushy, grassy grove	0.13	17	1.9	0.432	0.048
A5	S	34U 641346 5327854	141	stratified gravel and aleurit	wood belt, behind pasture ground	0.13	37	4.1	0.262	0.029
A6	S	34U 642144 5327772	316	stratified sand and aleurit	grass/pasture ground	0.13	32	3.6	0.678	0.075
A7	M	34U 643819 5327357	292	stratified gravel and aleurit	forest	0.95	73	8.1	2.503	0.278
A8	M	34U 644648 5327445	736	stratified sand and aleurit	grass/pasture ground	0.99	305	33.9	14.581	1.620
A9	M	34U 645502 5328158	428	stratified sand and aleurit	forest	0.99	117	13.0	6.354	0.706
A10	M	34U 646669 5328525	651	stratified gravel and aleurit	grass/pasture ground	0.87	53	5.9	1.720	0.191
B1	M	34U 637756 5328301	288	stratified sand and aleurit	forest	1.00	105	11.7	5.396	0.600
B2	M	34U 638878 5328236	376	stratified gravel and aleurit	grove	1.00	66	7.7	3.434	0.382
B3	M	34U 639582 5327803	432	gravel	forest	0.84	57	6.3	2.778	0.309
B4	M	34U 640081 5326930	316	stratified sand and aleurit	grass/pasture ground	0.84	106	11.8	4.721	0.525
B5	S	34U 641064 5326682	307	stratified gravel and aleurit	grass/pasture ground	0.32	69	7.7	1.500	0.167
B6	S	34U 641983 5326398	243	stratified sand and aleurit	grass/pasture ground	0.30	136	15.1	5.193	0.577

Our results showed that the sections with sandy-aleurit riverbank material are less protected; they are more liable to the effects of lateral erosion than the gravelly structured sections. Although our researches did not clarify with full certainty the riverbank erosion differences coming from the characteristics of the riverside covered with arborescent vegetation and herbaceous vegetation as well as their incidence rate; thus, it is certain that riverbank vegetation plays an important role in the fixation of the bank material.

5. Conclusions

Regarding the extensive river regulations we have less and less opportunity in the Carpathian Basin to study the riverbank formation processes of such fast changing, mostly naturally preserved rivers with braided branch system. With the help of the river bend change analysis, with respect to the Tisza section between Tiszaújlak and Tiszasásvár between 2006 and 2015, we established a digital database that can be used as a reference point to similar researches and justified that river bank erosion is influenced by the vegetation and there is moderate correlation between water discharge and the speed of lateral erosion. Contrary, there was no statistical relationship between the radius of the curvatures and the speed of the lateral erosion.

Acknowledgements

The authors would like to thank Sándor Gönczy for the professional advice, Csaba Kudlatyák for helping in mathematical-statistical operations and Enikő Nagy-Kolozsvári for the linguistic corrections of the manuscript.

6. References

Ackers, P. (1982): Meandering Channels and the Influence of Bed Material. In: Hey, R.D. – Bathurst, J.C. – Thorne, C.R. (Eds.)(1982): Gravel-bed Rivers. 389-421.

- Афанасьев, С. (2006): Структура біотичних угруповань та оцінка екологічного статусу річок басейну Тиси. Національна Академія наук України, Інститут гідробіології, Київ. 101.
- Alföldi, L. – Schweitzer, F. (2003): A Tisza vízrendszerének földrajzi és hidrológiai jellemzése. In: Teplán I. (Ed.)(2003): A Tisza és vízrendszere I. MTA Társadalomkutatató Központ, Budapest. 41-51.
- Balogh, K. (1991): Szedimentológia I. Akadémiai Kiadó, Budapest. 546.
- Bulla, B. – Mendöl, T. (1999): A Kárpát-medence földrajza. Lucidus Kiadó, Budapest. 210.
- Brookes, A. (1994): River channel change. In: Calow, P. – Petts, G.E. (Eds.)(1994): The rivers handbook: hydrological and ecological principles. Volume two. Blackwell Scientific Publications, Oxford. 55-75.
- Church, M. (1992): Channel morphology and typology. In: Calow, P. – Petts, G.E. (Eds.)(1992): The rivers handbook: hydrological and ecological principles. Volume one. Blackwell Scientific Publications, Oxford. 126-143.
- Davis, R.J. – Gregory, K.J. (1994): A new distinct mechanism of river bank erosion in a forested catchment. Journal of Hydrology. 157: 1-11.
- Hey, R.D. (1994): Environmentally sensitive river engineering. In: Calow, P. – Petts, G.E. (Eds.)(1994): The rivers handbook: hydrological and ecological principles. Volume two. Blackwell Scientific Publications, Oxford. 337-362.
- Hickin, E.J. (1984): Vegetation and river channel dynamics. Canadian Geographer. 28(2): 111-126.
- Kiss, T. – Fiala, K. – Sipos, Gy. (2008): Alterations of channel parameters in response to river regulation works since 1840 on the Lower Tisza River (Hungary). Geomorphology. 98(1-2): 96-110.
- Коноваленко, О. (2007): Оцінка розповсюдження типів русел річок басейн Верхньої Тиси за їх висотним положенням. Фізична географія та геоморфологія. 53: 104-115.
- Lászlóffy, W. (1949): A folyómedrek vándorlása. A vicksburgi laboratórium kismintatanulmányai. Friedkin J.F. tanulmánya nyomán. Vízügyi Közlemények. 31(1-2): 98-115.
- Левчак, О.Ю. – Лета, В.В. – Осійський, Е.Й. (2013): Гідроекологічна характеристика Верхньої Тиси (в межах Закарпатської області). – Науковий вісник Ужгородського університету, Серія: Географія. Землеустрій. Природокористування. 2: 13-20.

- Lóki, J. – Szabó, J. (2006): *Akülső erők geomorfológiája*. Debreceni Egyetem Kossuth Egyetemi Kiadó, Debrecen. 223.
- Mike, K. (1991): *Magyarország ósvízrajza és felszíni vizeinek története*. Aqua, Budapest. 698.
- Molnár, J. (2009): *Vízrajzi adottságok*. In: Baranyi, B. (Ed.) (2009): *Kárpátalja*. Dialóg Campus Kiadó, Pécs – Budapest. 130-141.
- Nagy, B. – Komonyi, É. – Molnár, J. – Gönczy S. – Izsák T. – Kucsinka, I. – Sándor, A. (2002): *A felsőtiszai árvizek kialakulásának tényezői, különös tekintettel az utóbbi évek katasztrófáira, illetve azok elhárításának lehetőségeire*. Kárpátaljai Magyar Tanárképző Főiskola adattára, Beregszász. 55.
- Németh, E. (1954): *Hidrológia és hidrometria*. Egyetemi tankönyv. Tankönyvkiadó, Budapest. 662.
- Поп, С.С. (2003): *Природні ресурси Закарпаття*. Спектраль, Ужгород. 296.
- Richard, G.A. – Julien, P.Y. – Baird, D.C. (2005): *Statistical analysis of lateral migration of the Rio Grande, New Mexico*. *Geomorphology*. 71: 139–155.
- Robert, A. (2003): *River processes. An introduction to fluvial dynamics*. Arnold, London. 214.
- Somlyódy, L. (2002): *A hazai vízgazdálkodás stratégiai kérdései*. In: Glatz F. (Ed.) (2002): *Magyarország az ezredfordulón. Stratégiai kutatások a Magyar Tudományos Akademián. VIII. A víz és vízgazdálkodás helyzete és jövője Magyarországon*. – Magyar Tudományos Akadémia, Budapest, XXIV + 402.
- Somogyi, S. (2003): *A Tisza vízgyűjtőjének földrajzi helyzete*. In: Teplán I. (Ed.) (2003): *A Tisza és vízrendszere I*. MTA Társadalomkutató Központ, Budapest. 17-27.
- Szikura, J. – Kolozsvári, I. (2012): *Környezeti változások a Felső-Tisza kárpátaljai vízgyűjtőjén*. *Acta Biologica Debrecina Oecologica Hungarica*, 27: 187-194.
- Tímár, G. (2005): *Az alluviális folyók alaktípusai és a típusok kialakulásának feltételei*. Irodalmi áttekintés és gyakorlati következtetések. *Hidrológiai Közlöny* 85(1): 1-10.
- Wade, P.M. (1994): *Management of macrophytic vegetation*. In: Calow, P. – Petts, G.E. (Eds.) (1994): *The rivers handbook: hydrological and ecological principles*. Volume two. Blackwell Scientific Publications, Oxford. 363-385.
- Заставецька, О.В. – Заставецький, Б.І. – Дітчук, І.Л. – Ткач, Д.В. (1996): *Географія Закарпатської області*. Підручники & посібники, Тернопіль. 96.